

DRAWING NUMBER  
477/165

DRAWING NUMBER

DRAWING NUMBER

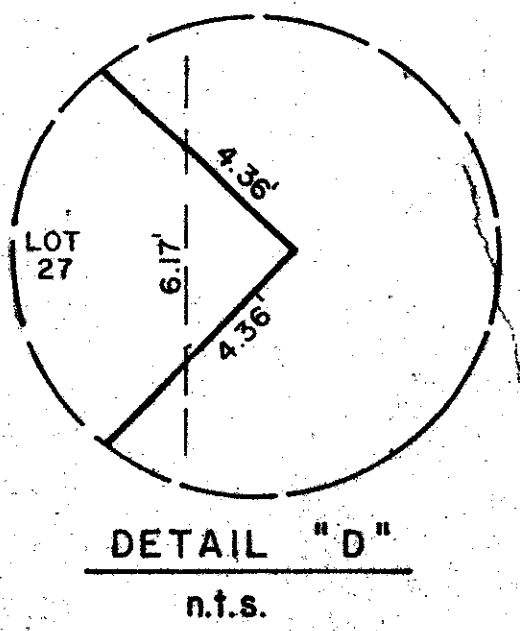
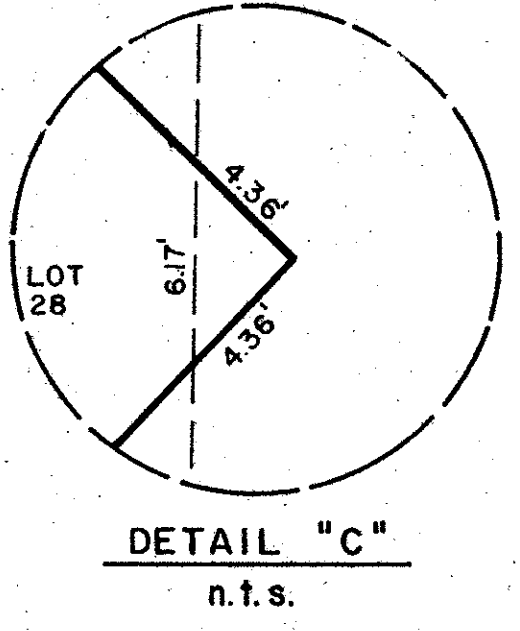
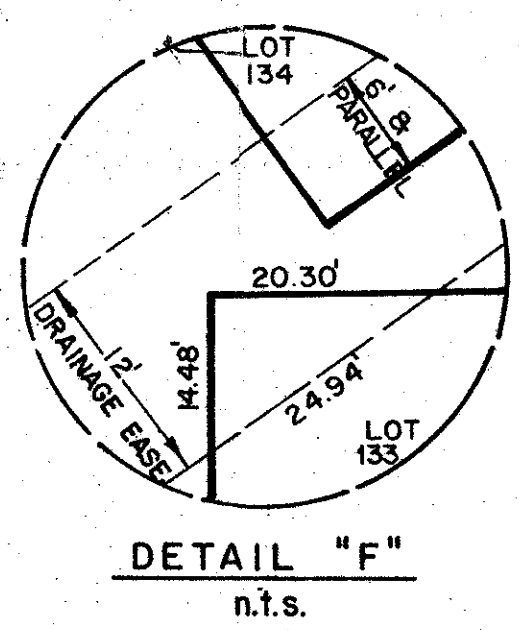
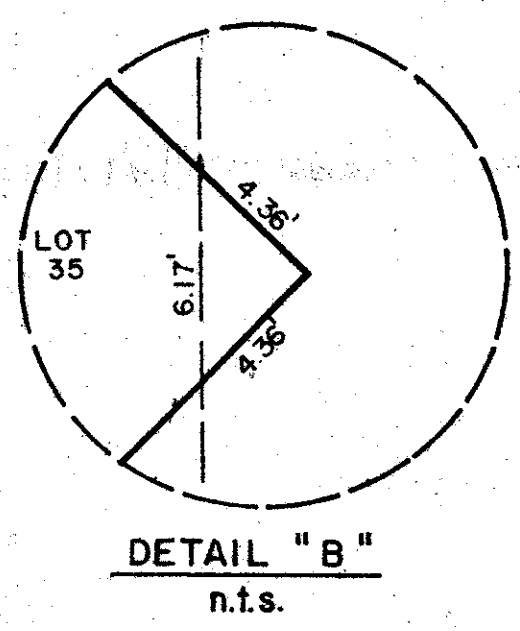
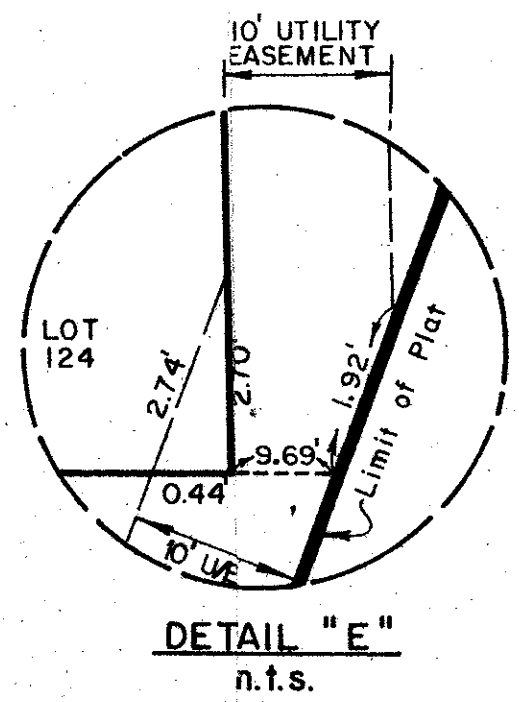
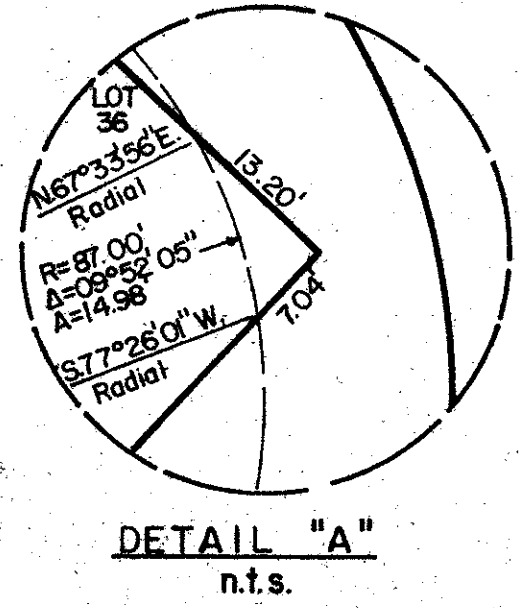
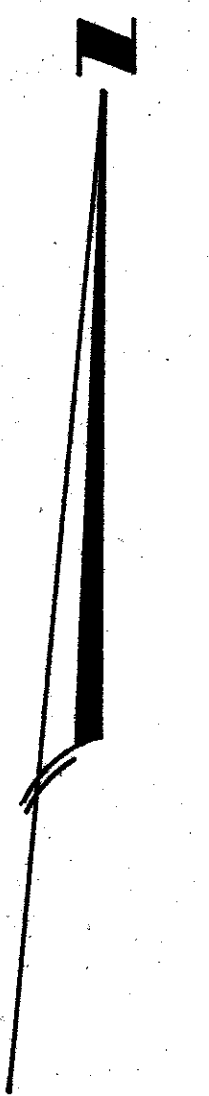
DRAWING NUMBER

# MERIDIANA AT BOCA POINTE PLAT II

165

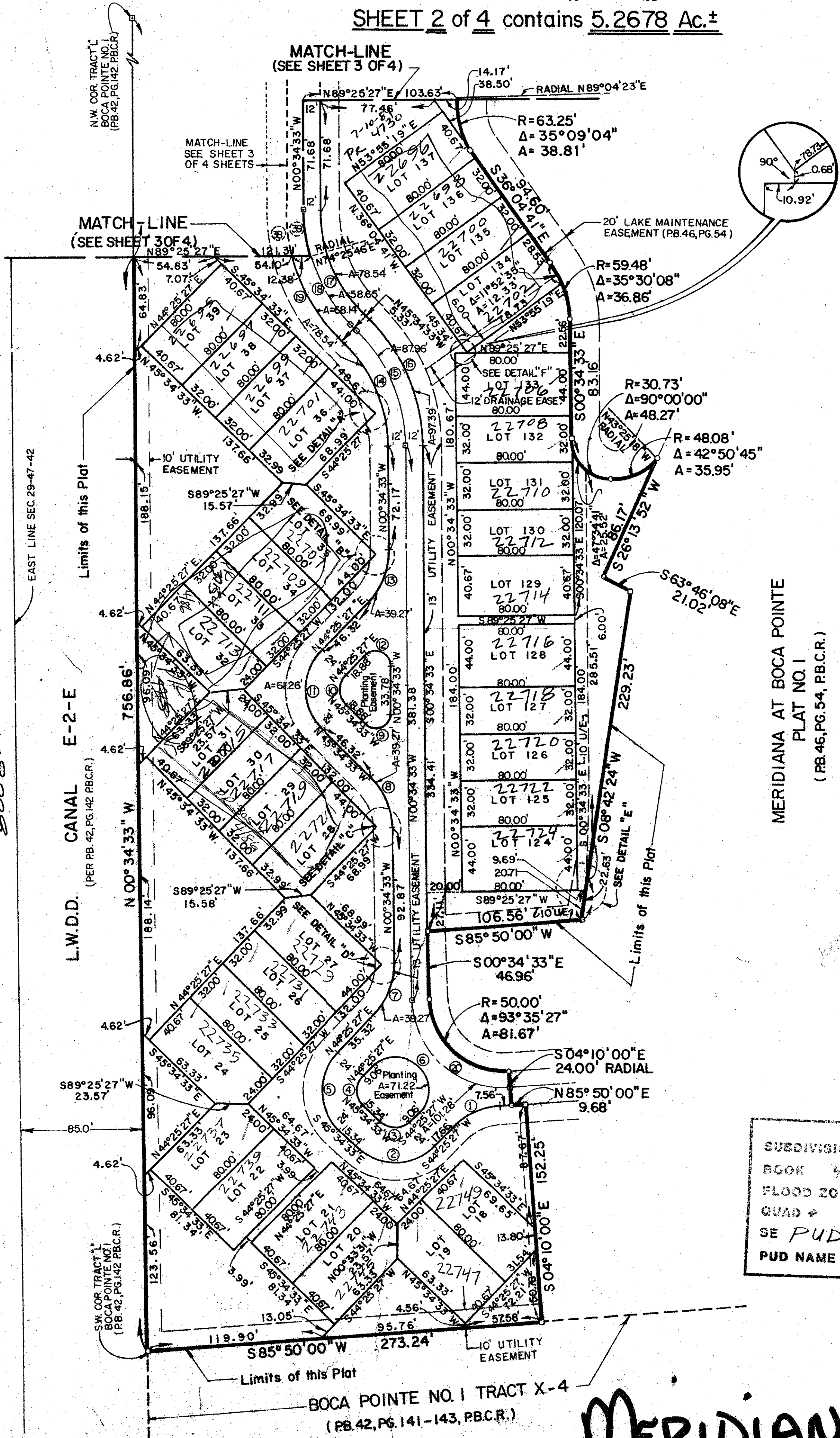
PART OF A P.U.D.  
A REPLAT OF A PORTION OF TRACT L OF BOCA POINTE No. 1, LYING IN SECTION 28, TOWNSHIP 47 SOUTH, RANGE 42 EAST, AS RECORDED IN PLAT BOOK 42, PAGES 141 THROUGH 143 INCLUSIVE OF THE PUBLIC RECORDS OF PALM BEACH COUNTY, BEING IN PALM BEACH COUNTY, FLORIDA

SCALE 1" = 50'  
SHEET 2 of 4 contains 5.2678 Ac.±



- NOTES:
- INDICATES P.R.M. (PERMANENT REFERENCE MONUMENTS)
  - BEARINGS SHOWN HEREON ARE REFERENCED TO THE PLAT OF BOCA POINTE No.1, P.B. 42, PG. 141-143 P.B.R. AS SHOWN ON THE SOUTH LINE OF TRACT "L" S.85-50-00W.
  - ⊙ INDICATES P.C.P. (PERMANENT CONTROL POINT)
  - ⊙ INDICATES IRON ROD WITH CAP
  - NO BUILDINGS OR ANY KIND OF CONSTRUCTION SHALL BE PLACED ON UTILITY AND DRAINAGE EASEMENTS.
  - NO STRUCTURES, TREES OR SHRUBS SHALL BE PLACED ON DRAINAGE EASEMENTS.
  - APPROVAL OF LANDSCAPING ON UTILITY EASEMENTS OTHER THAN WATER AND SEWER SHALL BE ONLY WITH THE APPROVAL OF ALL UTILITIES OCCUPYING SAME.

FLORIDA'S TURNPIKE



### CURVE DATA for SHEET 2 of 4

- |  |  |
|--|--|
| ① R=50.00'<br>Δ=41°24'35"<br>A=36.14'  | ⑩ R=39.00'<br>Δ=90°00'00"<br>A=61.26'  |
| ② R=39.00'<br>Δ=90°00'00"<br>A=61.26'  | ⑪ R=10.00'<br>Δ=135°00'00"<br>A=23.56' |
| ③ R=15.00'<br>Δ=90°00'00"<br>A=23.56'  | ⑫ R=50.00'<br>Δ=45°00'00"<br>A=39.27'  |
| ④ R=15.00'<br>Δ=90°00'00"<br>A=23.56'  | ⑬ R=100.00'<br>Δ=45°00'00"<br>A=78.54' |
| ⑤ R=39.00'<br>Δ=90°00'00"<br>A=61.26'  | ⑭ R=112.00'<br>Δ=45°00'00"<br>A=87.96' |
| ⑥ R=22.67'<br>Δ=180°00'00"<br>A=71.22' | ⑮ R=124.00'<br>Δ=45°00'00"<br>A=97.39' |
| ⑦ R=50.00'<br>Δ=45°00'00"<br>A=39.27'  | ⑯ R=100.00'<br>Δ=45°00'00"<br>A=78.54' |
| ⑧ R=50.00'<br>Δ=45°00'00"<br>A=39.27'  | ⑰ R=112.00'<br>Δ=30°00'19"<br>A=58.65' |
| ⑨ R=10.00'<br>Δ=135°00'00"<br>A=23.56' | ⑱ R=124.00'<br>Δ=31°29'07"<br>A=68.14' |
| ⑲ R=15.00'<br>Δ=90°00'00"<br>A=23.56'  | ⑳ R=62.00'<br>Δ=93°35'27"<br>A=101.28' |
| ㉑ R=124.00'<br>Δ=13°30'53"<br>A=29.25' |  |
| ㉒ R=112.00'<br>Δ=14°59'41"<br>A=29.31' |  |

SUBDIVISION = Meridiana  
 BOOK 47  
 FLOOD ZONE B  
 QUAD # 54  
 SE PUD  
 PUD NAME

0211-316

Darby and Way, Inc.  
PROFESSIONAL SURVEYORS AND ENGINEERS

# MERCIDIANA AT BOCA POINTE PLAT II